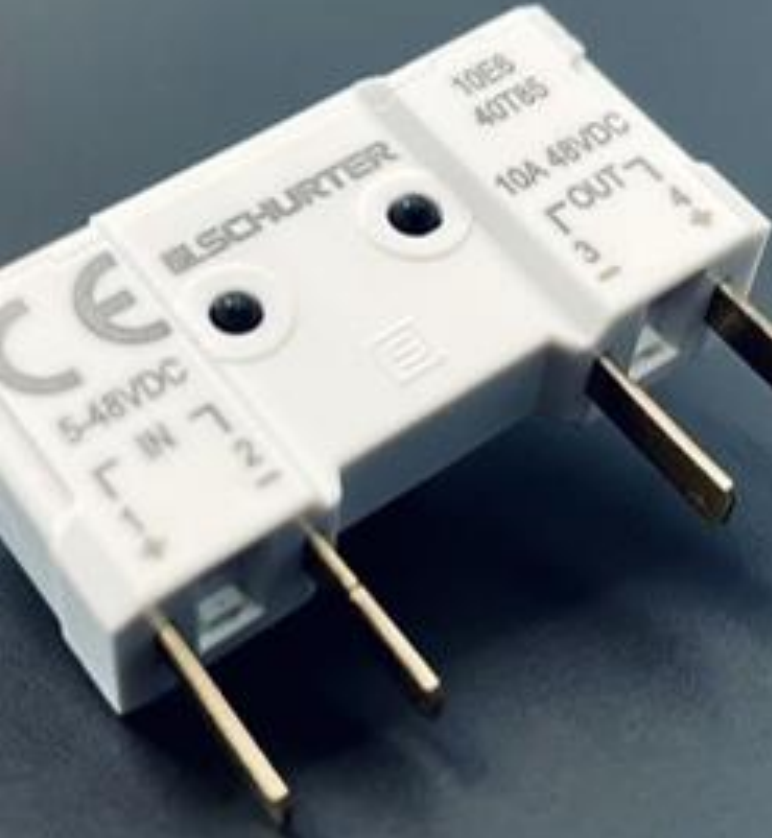




# EDC-Switch electronic direct current switch

Metal Line for safe & easy installations

## Trends in device- and systems engineering



- > DC networks are common in industry control devices
- > Battery-powered devices are increasingly becoming the standard in many applications.

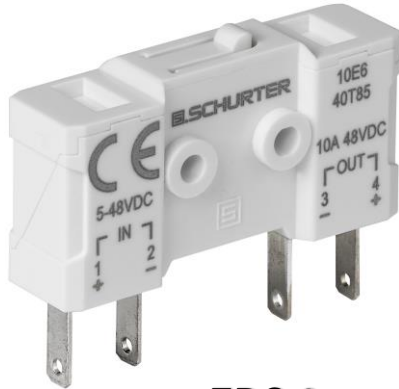
# EDC



- > Rated Current 10A@48VDC
- > Electromechanical DC micro switch
- > Long lifetime more than 1 mio. Switching cycles
- > Operating temperature -30°C – 85°C



EDC 1



EDC 2

## USPs

**EDC 1** - Micro switch for MSM II actuator

**EDC 2** - Micro switch stand alone

- > No light arc
- > More than 1 mio. switching cycles
- > Small & lightweight design

# EDC – Target Market Segments and Applications



## Yachting

- Space and weight savings: more compact and lightweight than mechanical alternatives
- Enhanced safety through electronic switching control no light arc.



## Robots

- Low power loss: Less heat generation means more efficient energy use.
- Saves space and weight
- Fast response time



## Industrial Control systems

- Faster switching improves loop performance and reduces control lag.
- Higher Reliability: No mechanical wear = fewer failures and less maintenance, ideal for continuous or hazardous operations.

# EDC- Applications



Industrial equipment



Medical devices



Avionics



Energy

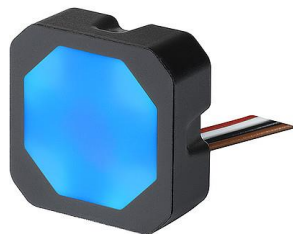


Marine & boats

- > 2 Designs
- > Electronic direct current switch  
10A@48VDC
- > No light arc



## SCHURTER switches for direct current application



**CHS 3**

- > Capacitive hidden switch
- > Water insensitive
- > 2A@48VDC
- > Fast & easy installation



**MSM II MO**

- > Mechanical momentary switch
- > Rated current 10A@48VDC
- > With and without illumination
- > More than 1 mio. switching cycles

# MSM II - Further Information

## Additional Information

- > Data Sheet: [EDC](#)
- > Click on our Digital Asset Management server [DAM](#) to download:
  - > Latest press releases
  - > Training presentations

## Technical Assistance

- > For general product questions contact your Inside Sales Representative.